

Tuesday, August 23, 2016

- P7 Inequalities on Calculator
- P7 Trios Activity

- HW: P7 Day 2 in text or P7 Day 2 on MML
(can also do MML Prereq Quiz Practice)



Quiz tomorrow: P1, P5, P7

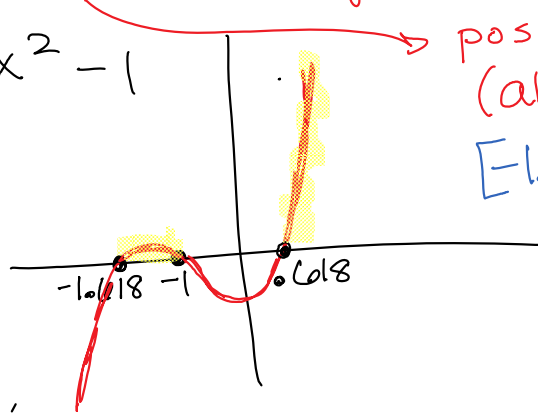
www.dimarcomath.weebly.com

P7 - Solving Inequalities Graphically

① $x^3 + 2x^2 - 1 \geq 0$

(Graph on Calculator)

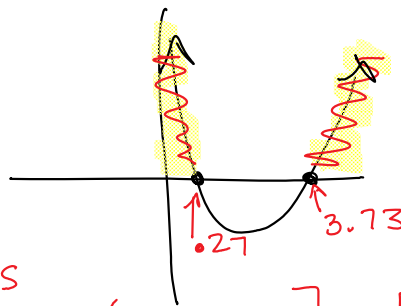
$y = x^3 + 2x^2 - 1$



pos and zeros
(above the x-axis)
 $[-1.618, -1] \cup [0.618, \infty)$

② $x^2 - 4x + 1 \geq 0$

↑
pos
and
zeros



$(-\infty, 0.27] \cup [3.73, \infty)$