

4.3 Practice

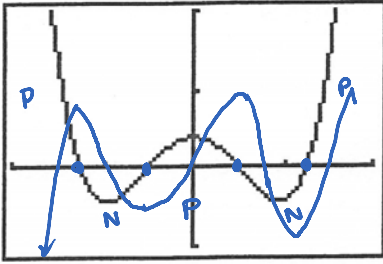
Sunday, November 16, 2014
9:49 AM

Graphs of f, f', f'' .

graphs of some functions are given below. Indicate on what intervals the functions are increasing and on what intervals they are decreasing, and then sketch the derivatives.

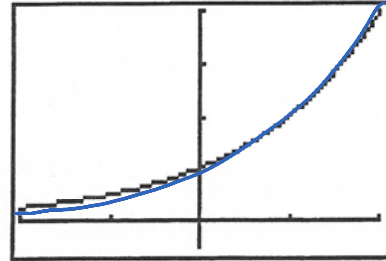
Given f' , sketch f

1.

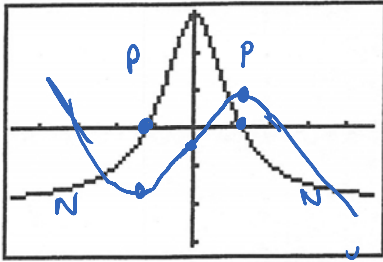


$f' = 0$, max/min for f

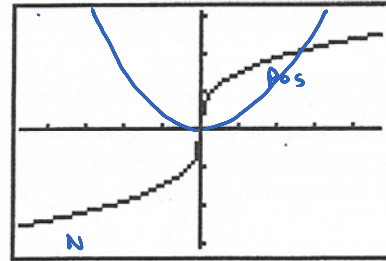
2.



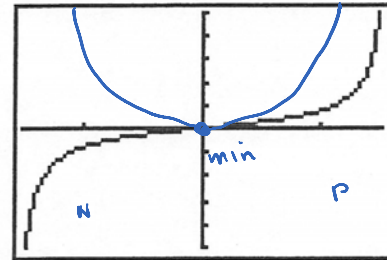
3.



4.

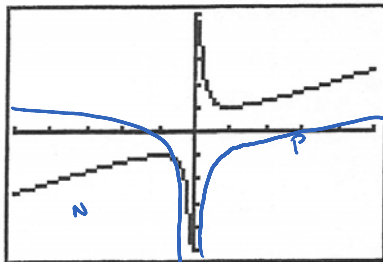


6.



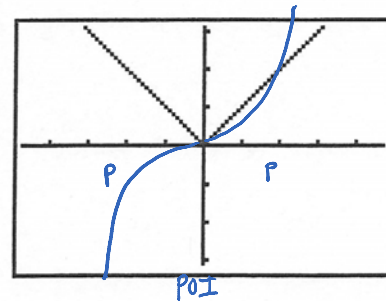
7.

check



8.

check



Repeat the exercise, except this time the graphs are of $y = f'(x)$. Indicate on what intervals the functions are increasing and on what intervals they are decreasing, and then sketch a graph of the function.

