

5.2 Practice

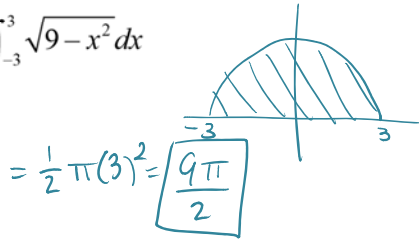
Friday, January 23, 2015 9:07 AM

Calc AB

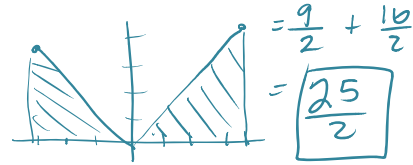
5.2 Evaluating Definite Integrals

Use the graph of the integrand and areas to evaluate the integral (NO Calculator).

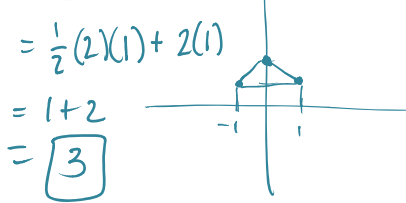
1.  $\int_{-3}^3 \sqrt{9-x^2} dx$



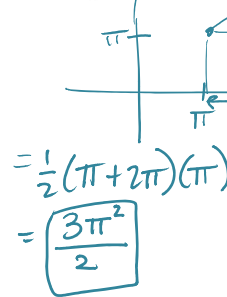
2.  $\int_{-3}^4 |x| dx = \frac{1}{2}(3)(3) + \frac{1}{2}(4)(4)$



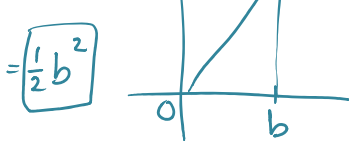
3.  $\int_{-1}^1 (2-|x|) dx$



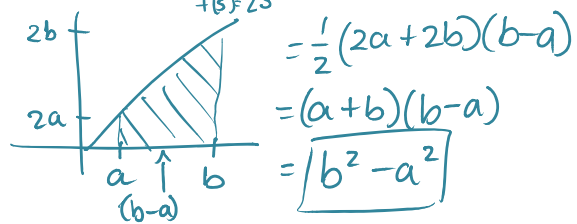
4.  $\int_{\pi}^{2\pi} \theta d\theta$



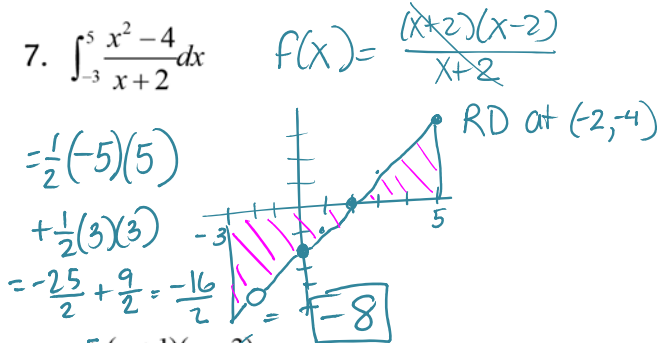
5.  $\int_0^b x dx$



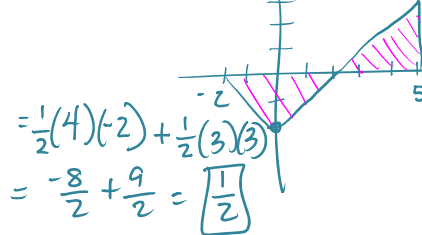
6.  $\int_a^b 2s ds$



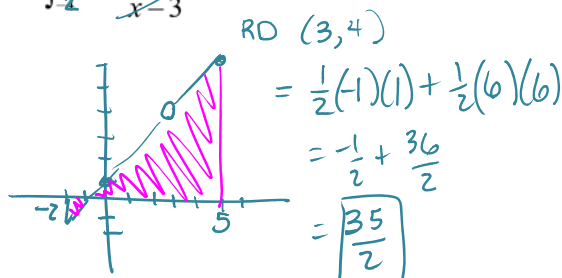
7.  $\int_{-3}^5 \frac{x^2-4}{x+2} dx$



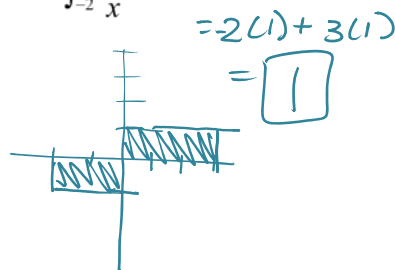
8.  $\int_{-2}^5 |x|-2 dx$

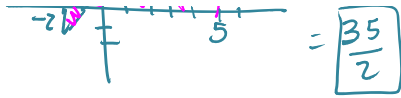


9.  $\int_{-2}^5 \frac{(x+1)(x-3)}{x-3} dx$



10.  $\int_{-2}^3 \frac{|x|}{x} dx$





|