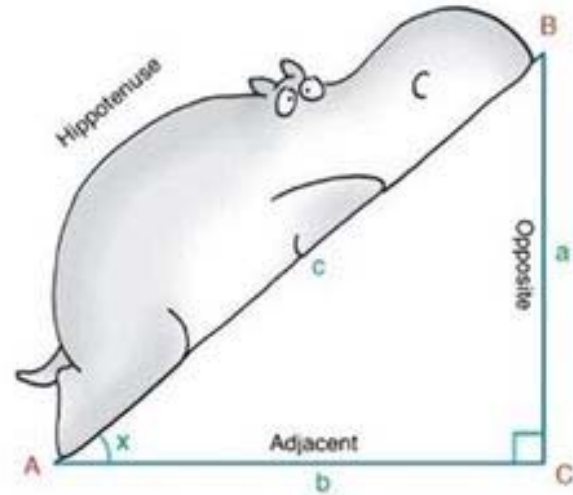
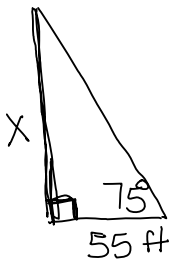


Thursday, January 12, 2017

- ✓ Homework Check
- ✓ Finish Peardeck & Discuss (and get grades/discuss course selection)
- ✓ 4.3 - Coterminal Angles & Circular Trig Functions



(61)



$$\tan 75^\circ = \frac{x}{55}$$

$$55 \tan 75^\circ = x$$

$$x \approx 205.26 \text{ ft}$$

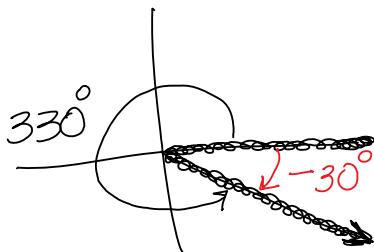
more awesome pictures at: THEMETAPICTURE.COM

4.3 Circular Trig Functions

Coterminal Angles: have the same initial side and same terminal side but different measures

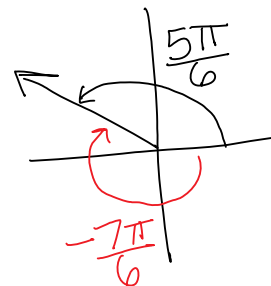
* Angles measured from + x-axis
+ angles go counterclockwise
- angles go clockwise

(1)



330° and -30° are

(2)



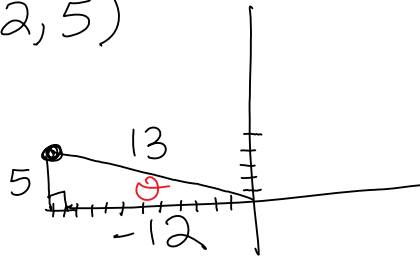
$\frac{5\pi}{6}$ and $-\frac{7\pi}{6}$ are

330° and -30° are
coterminal angles

$\frac{5\pi}{6}$ and $-\frac{7\pi}{6}$ are
coterminal angles

Trig is Not limited to Special \angle s $30, 45, 60, 90$ etc!

① Find the 6 trig functions for the
angle whose terminal side contains
 $(-12, 5)$



$$\sin \theta = \frac{5}{13}$$

$$\cos \theta = \frac{-12}{13}$$

$$\tan \theta = \frac{5}{-12}$$