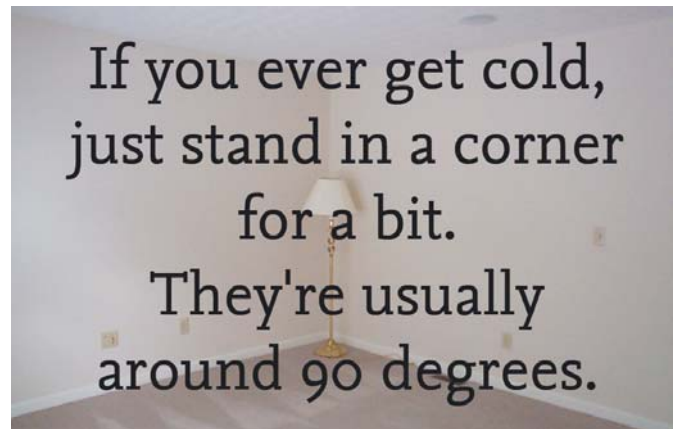


Wednesday, August 24, 2016

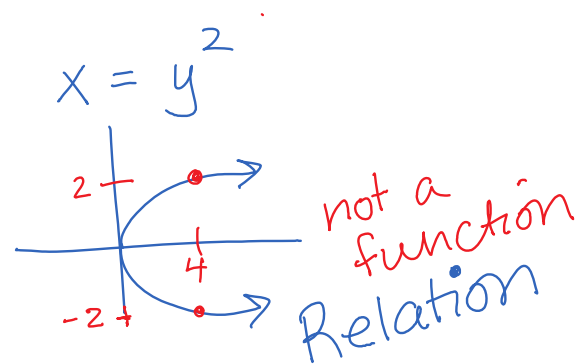
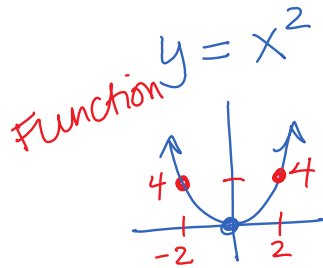
- Quiz 25 minutes
- 1.2 - Functions and Domains

HW: On New Calendar - do etext version or MML version

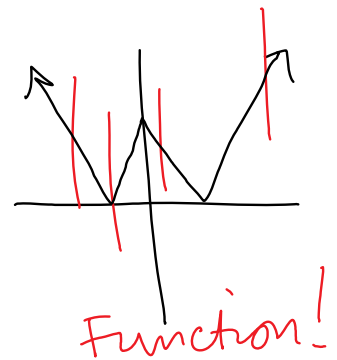
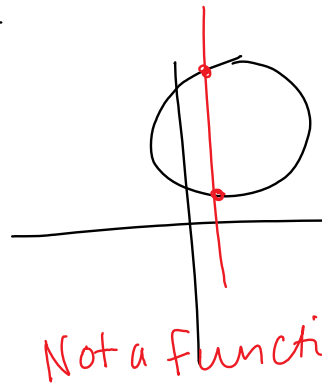
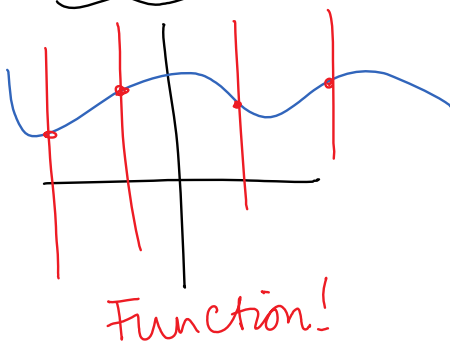


## 1.2 Functions

Function: rule in which each input has a unique output



Vertical Line Test



Domain: x-values of function

①  $f(x) = \frac{x+1}{x-2}$  ← denom can't = 0

$$x - 2 \neq 0$$

$$x \neq 2$$



Domain:  $(-\infty, 2) \cup (2, \infty)$

Domain:  $(-\infty, 2) \cup (2, \infty)$

②  $f(x) = \sqrt{x+3}$  ← under  $\sqrt{\quad}$  greater than  
or = to 0

$$x+3 \geq 0$$

$$x \geq -3$$